


MADDOX



Savannah

83.5M (274FT) | 12 GUESTS | 6 CABINS | FEADSHIP | 2015

ASKING \$149,000,000



Savannah put a marker down
with her *hybrid propulsion*, this
is *where yachting is headed*.

WILL HARRISON, CEO

The *multi-award-winning* Savannah is one of the *most spectacular superyachts* afloat today, being lauded for exterior, interior and holistic design, as well as the coveted *Motor Yacht of the Year 2016 award*.

When she was launched by Feadship's De Vries shipyard in 2015, she set a new standard for lifestyle, design, technology and eco credentials. As the world's first electro-mechanic superyacht, her efficient hull and electric-diesel hybrid propulsion provide cheaper, more energy efficient and quieter cruising than other yachts in her class.

As the world's largest painted metallic object, her clean lines are complemented by walls of glass that wrap around the decks. And since her launch, she has had a full repaint in 2020, resulting in a pristine, perfectly maintained appearance.

From the moment you land on the touch-and-go helipad, you feel this is the ultimate in luxury. Cristina Gherardi Bernadeau and Marcello Bozzarelli of CG Design have reimagined what a yacht interior can be, with elegantly curved rooms and cabins that cocoon visitors, using glorious dark rosewood floors, polished columns and high-gloss

metallic finishes throughout. But then, every space on board – from the generous lounges and dining areas to the well-equipped gym, spa and hammam – lift the spirits with awe-inspiring design, detail and finish.

At the heart of the yacht is the astonishing 'Nemo' underwater lounge, with a sheet-glass wall and vast oval skylight, which makes the most glamorous entertaining space imaginable – or a space for wildlife enthusiasts to indulge their interest. But then glass is everywhere here, ensuring enthralling views wherever you are.













Accommodating 12 guests across six opulent cabins, Savannah has a spacious VIP suite, two doubles and two convertible cabins forward on the main deck. Above, the vast owner's deck steals the show, with a huge stateroom as well as a dining room, salon, office, stunning marble bathroom and dressing area.



There's even a huge skylight above the bed for waking up to a vast blue sky. The suite provides an exclusive retreat for the owner, and gives onto a private terrace and helipad.

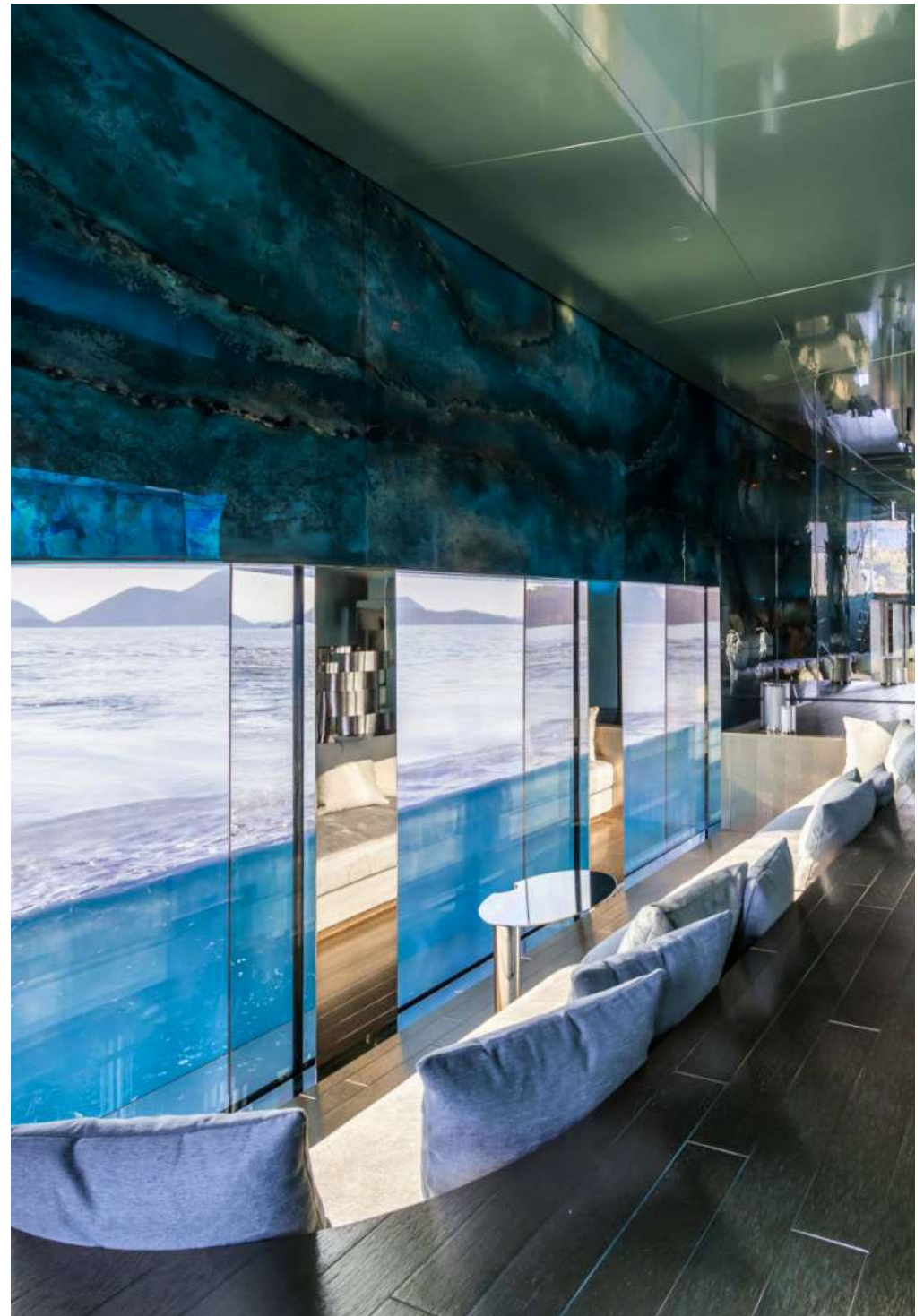
On deck, there's always something to do. The nine-metre aft-deck pool is surrounded by daybeds and a huge sofa, connecting through curved sliding doors to the main salon for one large, glamorous entertaining space. The pool is a few steps away from the oversized swim platform, and there is a DJ station on the sun deck. There's even an onboard basketball court and golf driving range; that is, if you can tear yourself away from the exhaustive toy collection, a host of Seadoos, Seabobs, electric surfboards, laser sailboats, SUPs, kayaks, Roubaix bikes, diving and snorkelling gear... as well as a spectacular 9.5m limousine tender and a 9.5m sport tender.

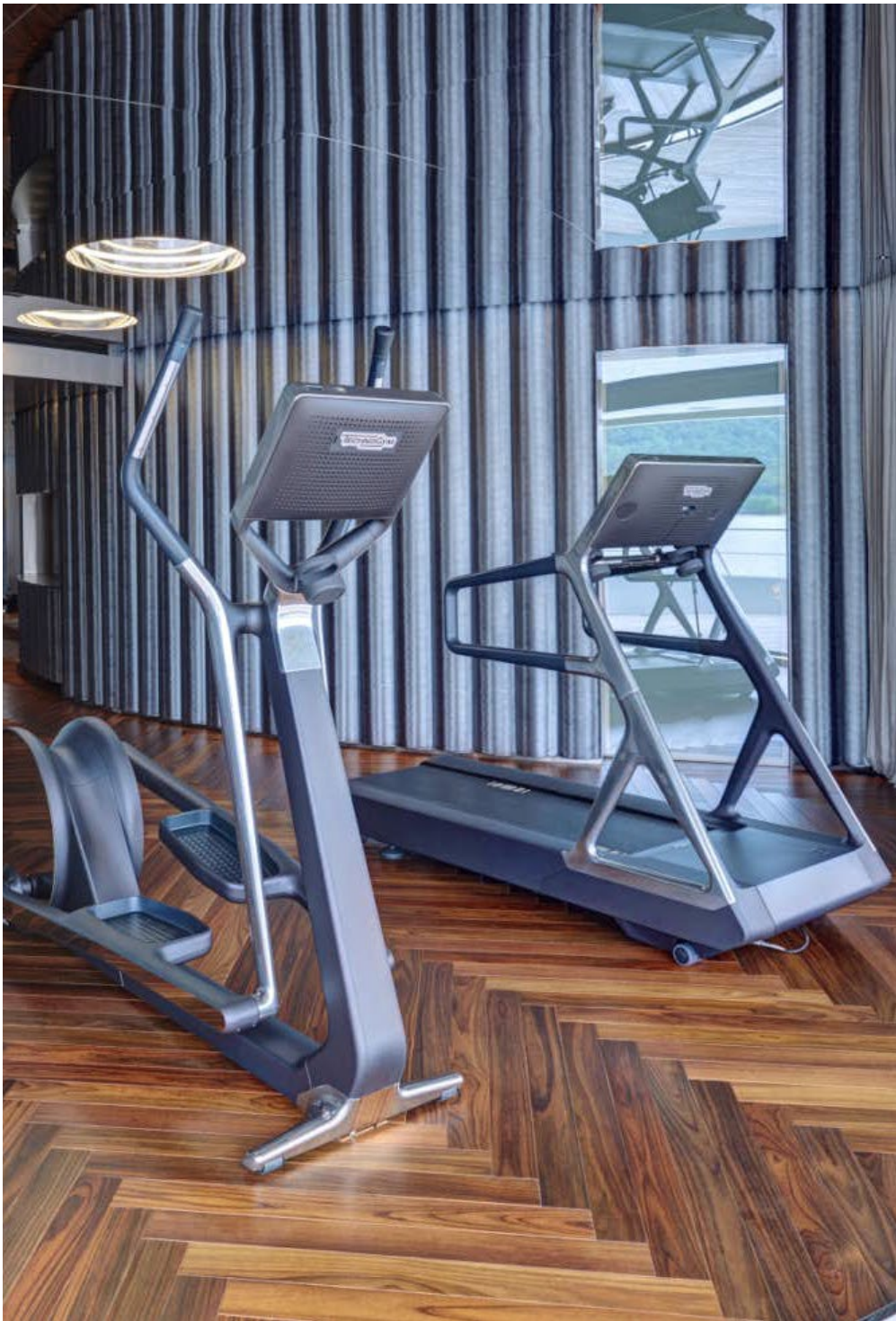
Specifications

	LENGTH	83.5M / 273'11"FT		DRAFT	3.9M
	YEAR	2015		BEAM	12.5M
	BUILDER	FEADSHIP		HULL MATERIAL	STEEL
	GRT	2250		RANGE	6,500NM
	GUEST CABINS	6		GUESTS	12
	MAX SPEED	17 KNOTS		CRUISING SPEED	14 KNOTS

KEY FEATURES

- ★ Multi Award Winning Yacht
- ★ Feadship Flagship
- ★ Underwater Viewing Room
- ★ Stunning Entertainment Spaces
- ★ Oversized Swim Platform
- ★ Swimming Pool & Jacuzzi
- ★ All level elevator
- ★ Hybrid propulsion system
- ★ One of the most sought-after charter yachts
- ★ Full Repaint in 2020



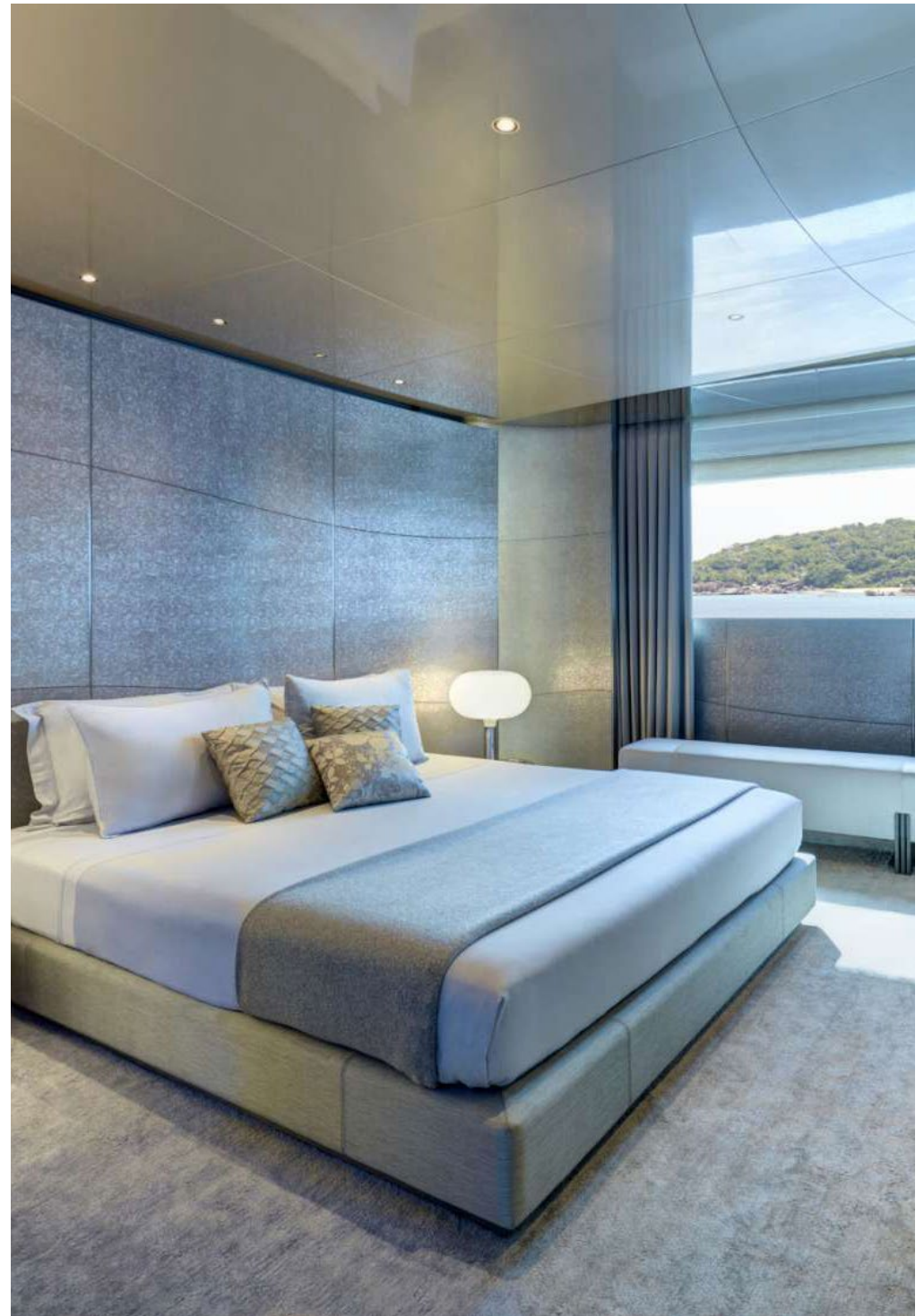


TOYS & TENDERS

- ✓ 9.50m Limousine tender
- ✓ 9.50m Sport tender
- ✓ 40hp RIB
- ✓ Seadoo Spark jet ski
- ✓ 2 x Seadoo Wake waverunners
- ✓ 4 x Seabobs
- ✓ 2 x Efoil Flite boards
- ✓ 2 x Awake Electric Surf boards
- ✓ Tiwal sailing boat
- ✓ Kayaks
- ✓ Multiple water skis and wake boards
- ✓ Large assortment of Inflatable tows
- ✓ Scuba dive sets
- ✓ Dive compressors
- ✓ Jumbo Inflatable slide and trampoline
- ✓ On board basketball court

QUARTERS

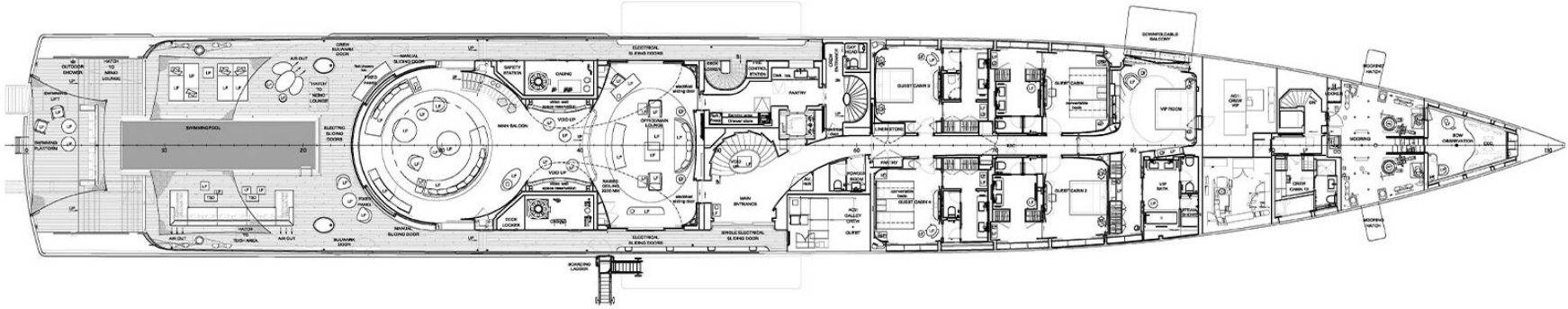
Savannah can accommodate 12 guests across six cabins, 1 VIP Cabin, 2 Doubles and 2 convertible cabins play host to guests while the Owner's suite offers large amounts of space for a master bedroom, study, lounge, marble bathroom and unique features such as a private terrace and a huge skylight over the master bed.

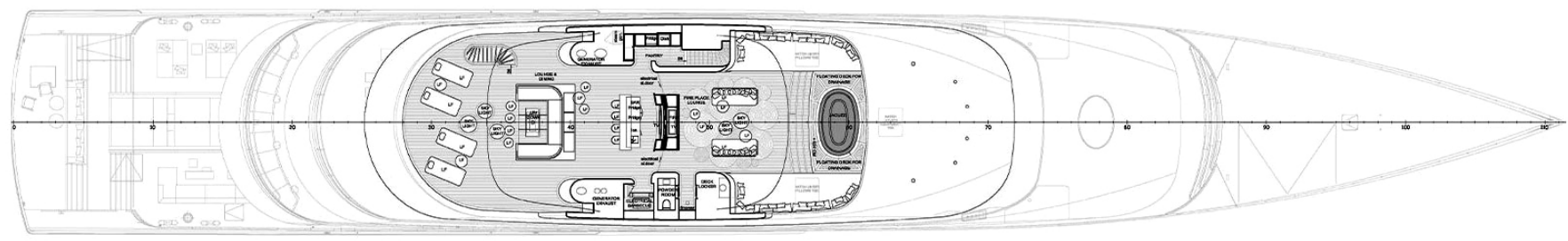


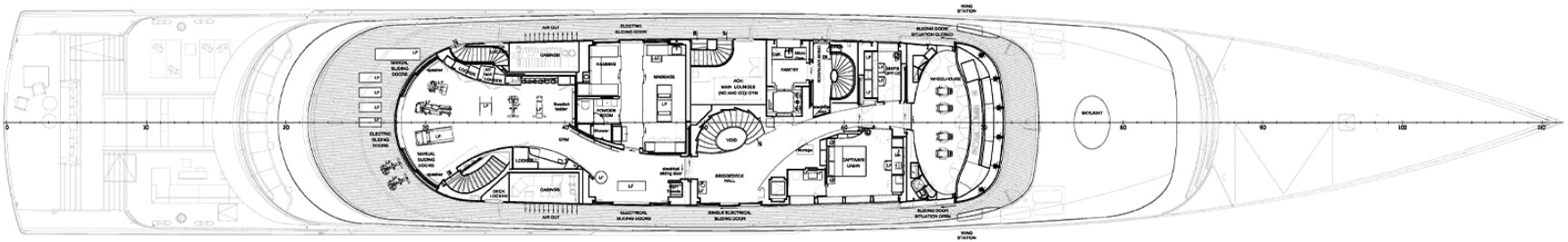
TECHNICAL INFORMATION

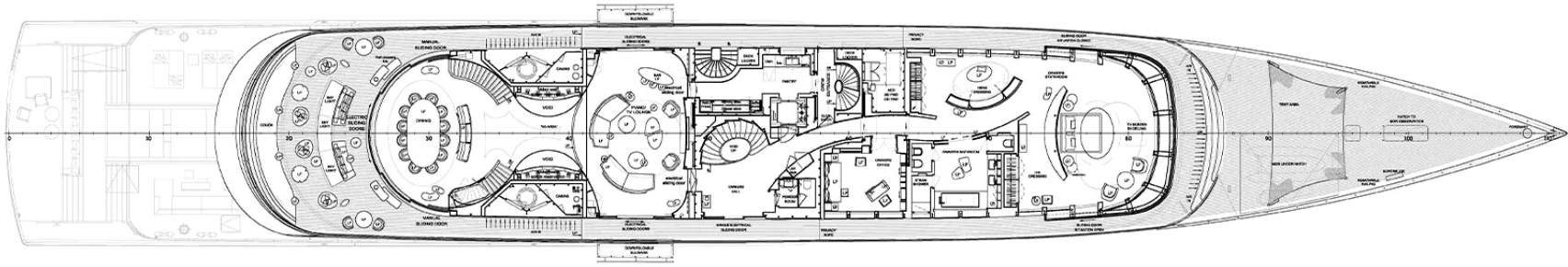
- ✓ Length: 83.5m
- ✓ Year: 2015
- ✓ Gross Tonnage: 2250
- ✓ Beam: 12.5m
- ✓ Max Draft: 3.9m
- ✓ Builder: Feadship
- ✓ Hull Construction: Steel
- ✓ Superstructure Construction: Aluminium
- ✓ Exterior Designer: Studio De Voogt
- ✓ Interior Designer: CG Design
- ✓ Engines: Hybrid – 1x Wärtsilä 9L20 4stroke@1800kw
- ✓ Generators: 1x Caterpillar C32 & 2x Caterpillar C18
- ✓ Flag: Marshall Islands
- ✓ Guest Cabins: 6
- ✓ Guests: 12
- ✓ Cruising Speed: 14 Knots
- ✓ Max Speed: 17 Knots
- ✓ Range: 6,500nm

Deck Plans









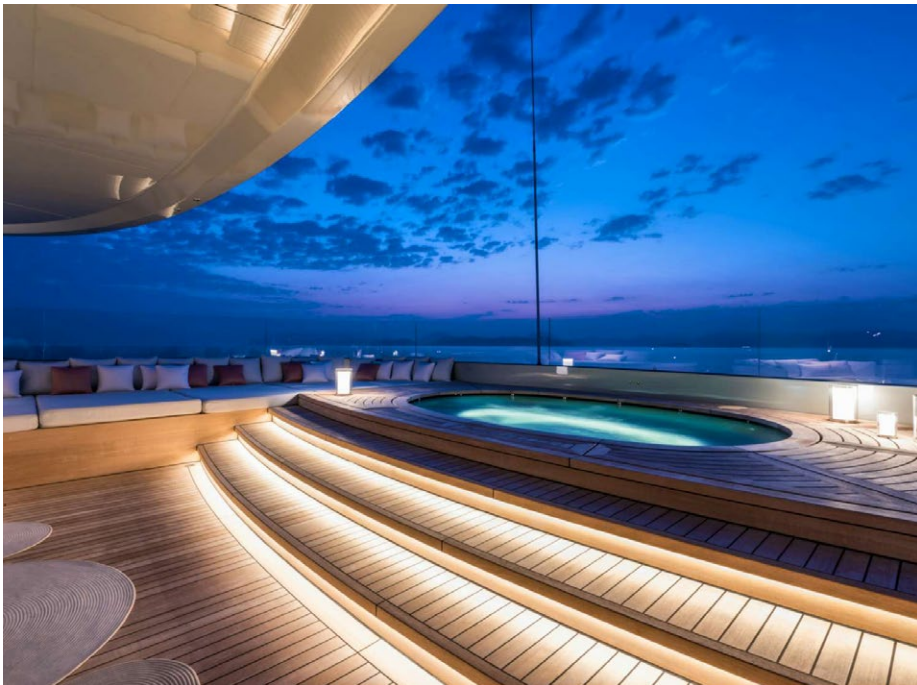
Gallery











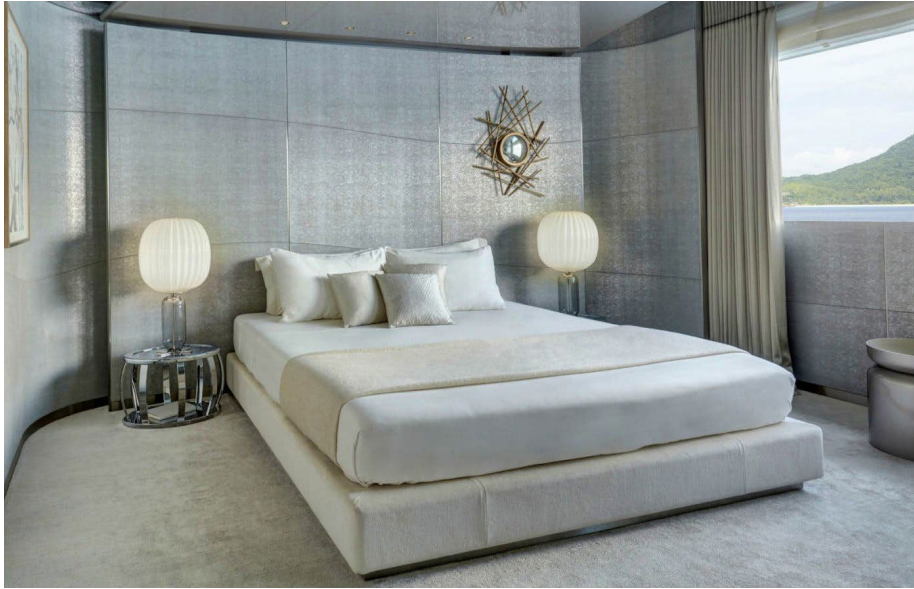


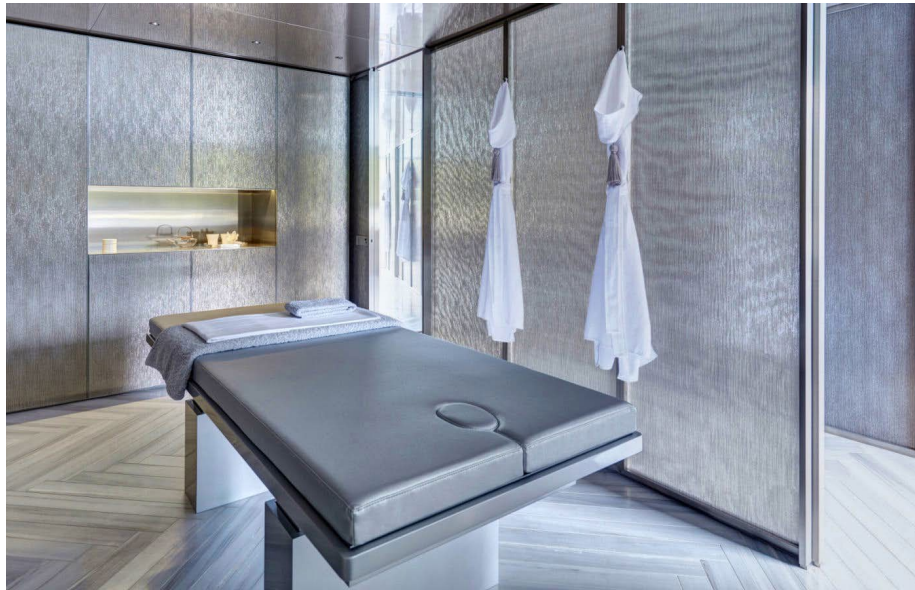
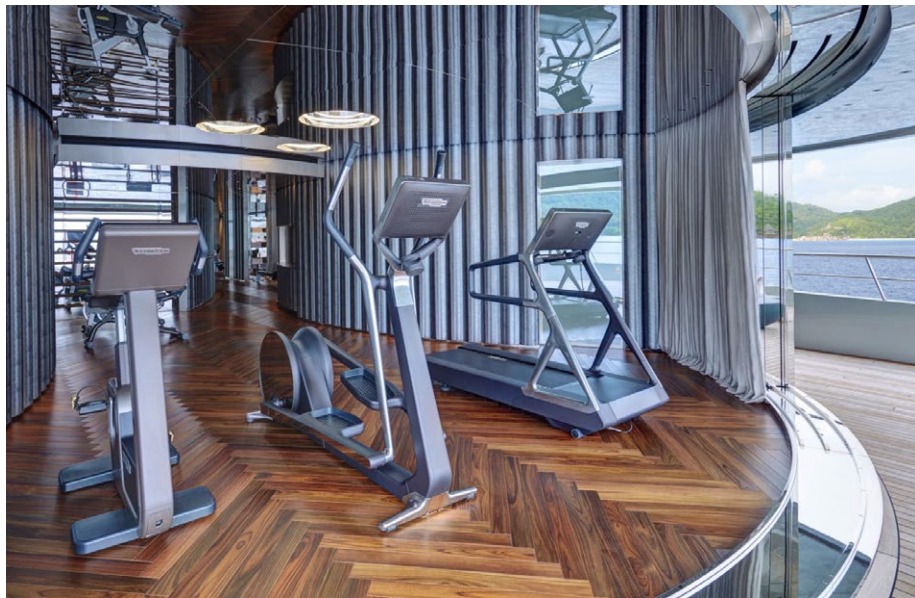
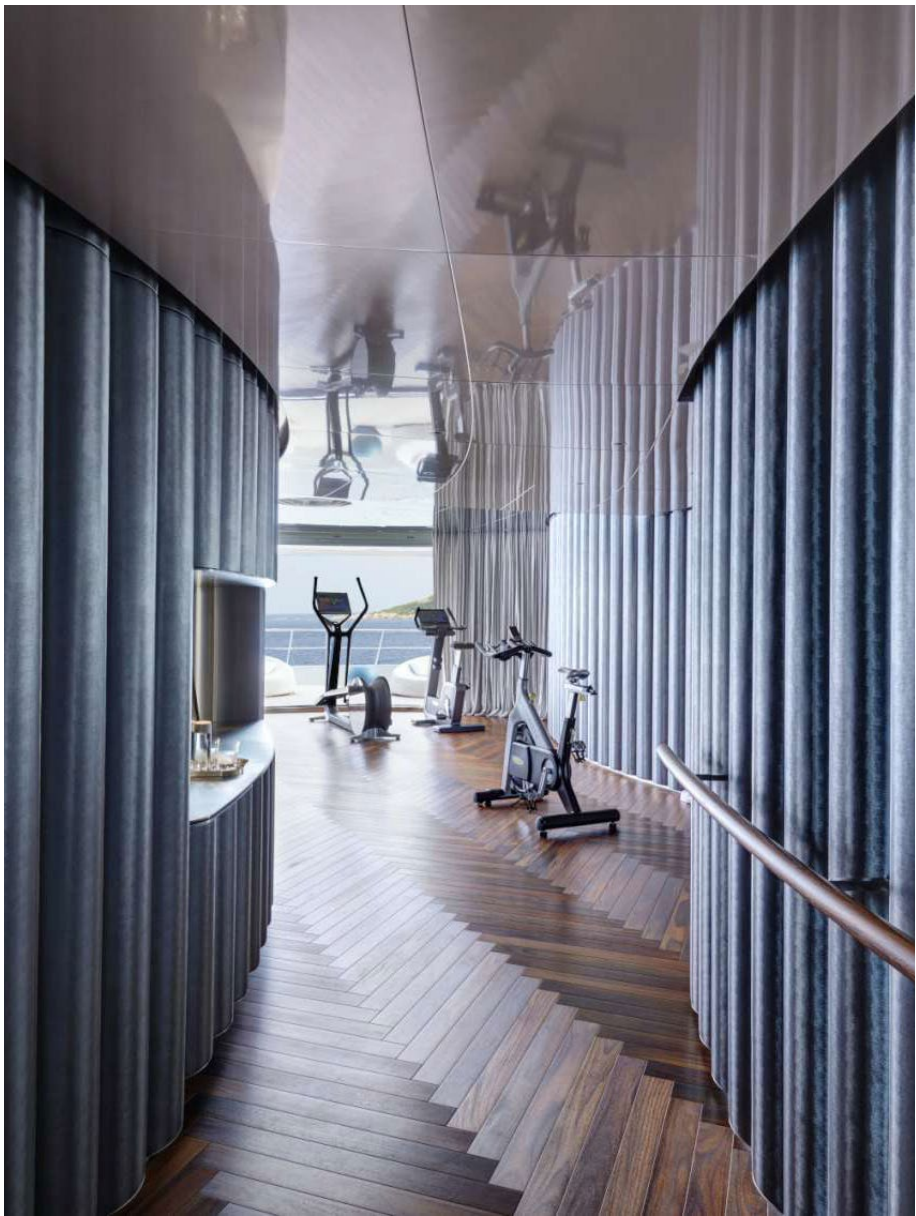












MADDOX

If you have *any questions* relating
to this *superyacht* please email us
enquiries@maddox.yachts